

DESCRIPTION

AMC MODEL SWN-2181-TRA IS A REFLECTIVE DPDT SWITCH MODULE WITH INTEGRAL TTL DRIVER.

SPECIFICATIONS

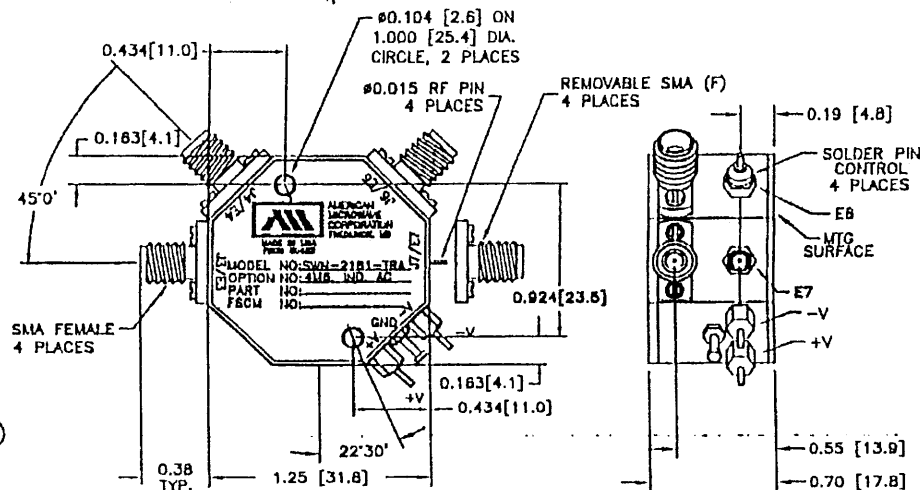
- FREQUENCY RANGE 0.004-6 GHz
- INSERTION LOSS 0.004-6 GHz, 3.0 dB MAXIMUM
- ISOLATION 0.004-6 GHz, 25 dB MINIMUM
- VSWR (ON) 2.0:1 MAXIMUM
- RF POWER RATING 1W CW, 75W PEAK (1μS, PW MAXIMUM)
- SWITCHING TIME
 - RISE (10% RF TO 90% RF) 150 ns MAXIMUM
 - FALL (90% RF TO 10% RF) 50 ns MAXIMUM
 - ON (50% TTL TO 90% RF) 600 ns MAXIMUM
 - OFF (50% TTL TO 10% RF) 200 ns MAXIMUM
- HARMONICS -40 dBc @ +10 dBm
-30 dBc @ LOW FREQUENCY
- CONTROL TTL, LOW POWER SCHOTTKY, (UNITY LOAD)
(SEE TRUTH TABLE)
LOGIC "0" = ISOLATION
LOGIC "1" = INSERTION LOSS
- POWER SUPPLY +5VDC ±5% @ 150 mA MAXIMUM
-5VDC ±5% @ 100 mA MAXIMUM
- CONNECTORS
 - RF INPUT/OUTPUT SMA (FEMALE)
 - POWER SOLDER PIN
 - CONTROL SOLDER PIN
- SIZE 1.25" x 1.25" x 0.70"

AVAILABLE OPTIONS

- 4M6 4 MHz TO 6 GHz FREQUENCY RANGE
- IND INDEPENDENT CONTROL
- AC SPECIAL CUSTOMER SPECIFICATION

| REVISIONS | | | | |
|-----------|------|--------------------------------|----------|----------|
| ZONE | REV. | DESCRIPTION | DATE | APPROVED |
| A | | ORIGINAL RELEASE, JOB # 711231 | 04/20/98 | |

MECHANICAL OUTLINE



| TRUTH TABLE | | | | | |
|-------------|----|----|----|---------|----|
| E3 | E4 | E6 | E7 | RF PATH | ON |
| 1 | 0 | 0 | 1 | J3-J7 | |
| 1 | 0 | 1 | 0 | J3-J8 | |
| 0 | 1 | 0 | 1 | J4-J7 | |
| 0 | 1 | 1 | 0 | J4-J8 | |

NOTES:

- 1) DIMENSIONS ARE IN INCHES [MILLIMETERS]
- 2) TOLERANCES: X.XX ±0.020
X.XXX ±0.010
- 3) WEIGHT: APPROX. 2.0 OZ

ENVIRONMENTAL RATINGS

- TEMPERATURE:
 - OPERATING -65°C TO +110°C
 - NON-OPERATING -65°C TO +125°C
- HUMIDITY MIL-STD-202F, METHOD 103B COND. B
- SHOCK MIL-STD-202F, METHOD 213B COND. B
- VIBRATION MIL-STD-202F, METHOD 204D COND. B
- ALTITUDE MIL-STD-202F, METHOD 105C COND. B
- TEMPERATURE CYCLE MIL-STD-202F, METHOD 107D COND. A



AMERICAN MICROWAVE CORPORATION
7311G GROVE RD., FREDERICK, MD. 21701
TEL: (301) 662-4700 FAX: (301) 662-4938

| APPROVALS | DATE |
|-----------------|----------|
| DRAWN R.R.A. | 04/20/98 |
| CHECKED | |

PRODUCT FEATURE
SWN-2181-TRA OPTION 4M6,IND,AC
4 MHz-6 GHz, DPDT SWITCH MODULE

SIZE A SHEET 1 OF 2 DWG. # 100-4382